


WEST GTA STROKE NETWORK IN SERVICE



Presented by: Ashley Budd, Clinical Services
Manager



1

PRESENTATION OVERVIEW

- Overview of services at Mind Forward
- Memory and Brain Health Program
- Peer Support Groups
- Caregiver Supports
- How to apply
- Eligibility Criteria



2

OVERVIEW OF SERVICES AT MIND FORWARD



3

OVERVIEW OF SERVICES AT MIND FORWARD



Assisted Living/Residential

- MMP Treatment Beds (PHD West, TRSL)
- Residential Rehabilitation & Treatment (Britannia, Conover, Windsor Hill)
- Partnerships (Thrive, SHIP, Region of Peel)
- Supported Independent Living (SIL)



Outreach Services

- Day Services (Social/Recreational, Functional Training, Clinical Psychosocial Adjustment)
- Seniors Program (Allendale Integration Partnership & Neurobehavioural Support Workers)
- Case Management



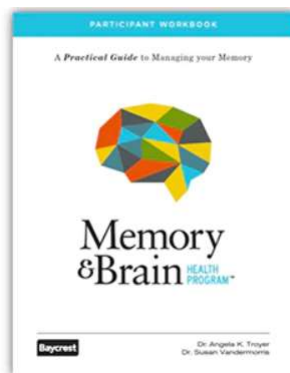
Clinical Services

- Family Support
- Neuropsychiatry
- Psychology
- Behavioural Consultation
- System Coordination/Navigation
- Concussion Education
- Brain Injury Family Intervention (BIFI)
- Memory and Brain Health - NEW



4

MEMORY AND BRAIN HEALTH PROGRAM



5

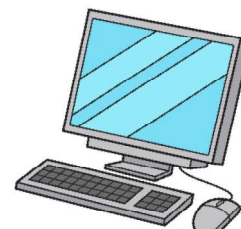
PEER SUPPORT GROUPS



6

HOW TO APPLY

- Anyone can refer
- Application is available on website: www.mindforward.org
- Call Ashley at 905-949-4411 ext. 240



9

MORE QUESTIONS?



Ashley Budd
Clinical Services Manager
Ashley.Budd@mindforward.org
905 949 4411 ext. 240



10